



REPSSI Annual Report 2012

Cover photo © REPSSI/ Willem De Lange. Used with permission

Publication Copyright: REPSSI (2013), REPSSI Annual Report 2012. Johannesburg: REPSSI. www.repssi.org

The opinions expressed herein are those of the author(s) and do not necessarily reflect the views of any of the funding partners.

Email: info@repssi.org

Website: www.repssi.org

Tel: +27 11 998 5820

Postal address: PO Box 1669, Randburg, 2125, Johannesburg, South Africa





REPSSI Annual Report 2012

Acronyms & Abbreviations

ACAC	Associação Casa Amiga da Criança (Mozambique)	NFSD	Novartis Foundation for Sustainable Development
BOCODOL	Botswana College of Distance Open Learning	NGOC	Non Governmental Organization Coalition for the rights of the child
BOTA	Botswana Training Authority	NMCF	Nelson Mandela Children's Fund
CAA	Catholic AIDS Action	PCI	Project Concern International
CAFO	Church Alliance for Orphans	PSS	Psychosocial Support
CBWCY	Community Work with Children and Youth	RATN	Regional AIDS Training Network
CCABA	Coalition for Children Affected by AIDS	SADC	Southern African Development Community
DSS	Department of Social Services (Botswana)	SARCS	South African Red Cross Society
EAC	East African Community	SSDL	Situated, Supported, Distance Learning
INAC	Instituto Nacional da Criança (National Children's Institute, Angola)	TRA	Touch Roots Africa
ISW	Institute of Social Work (Tanzania)	UNISWA	University of Swaziland
LLCL	LifeLine ChildLine	VSO RAISA	Voluntary Service Overseas Regional AIDS Initiative of Southern Africa
MAGGA	Malawi Girl Guides Association	ZNCWC	Zimbabwe National Coalition for the Welfare of Children
NAMCOL	Namibian College of Distance and Open Learning		



Contents

ABOUT REPSSI	2
ABOUT PSYCHOSOCIAL SUPPORT	3
MESSAGE FROM THE BOARD CHAIRPERSON	4
MESSAGE FROM THE EXECUTIVE DIRECTOR.....	5
REPSSI@10	5
TEACHER'S DIPLOMA	9
CERTIFICATE COURSE IN COMMUNITY-BASED WORK WITH CHILDREN AND YOUTH	10
COUNTRY PROFILES	14
FINANCIAL REPORT 2012	24
LIST OF REPSSI PARTNERS	26



About REPSSI

Who is REPSSI?

REPSSI (the Regional Psychosocial Support Initiative), is a non profit organization that partners with governments, development partners, international organizations and NGOs to provide programmes that strengthen communities' and families' competencies to promote the psychosocial wellbeing of their children and youth. This enables children and youth across East and Southern Africa to overcome the social and emotional impact of poverty, conflict, HIV and AIDS.

We work within the framework of national government programmes, to promote a regional, coordinated response to providing psychosocial support.

Our Vision

Communities and families nurture, protect and empower children and youth to enhance their psychosocial wellbeing.

Our Mission

REPSSI provides technical leadership in psychosocial support for children and youth.

Where does REPSSI work?

REPSSI is headquartered in South Africa, with offices in Tanzania, Zambia and Zimbabwe. In 2012, REPSSI worked in 13 countries in East and Southern Africa. See the map on page 13 for more details.





About Psychosocial Support

Love. Care. Protection.

All children have material needs such as food, shelter, health care and education. However, children also have the right to be cared for, loved, encouraged and protected from harm.

Children and youth exposed to poverty, conflict, HIV and AIDS are especially in need of care for their emotional and social wellbeing. Many have lost parents and family, experienced deprivation and abuse, been stigmatised, witnessed atrocities, and suffered overwhelming grief.

If we wish to realize the tremendous potential of these children, if we wish to build strong and productive communities, if we wish to prevent HIV infections and promote healthy behaviour, if we wish to change attitudes and reduce discrimination... then we need to provide love, care and protection for all children and youth.

We need to provide strong systems around children and youth to build their resilience and help them move beyond coping to **thriving**.

What is psychosocial support?

Psychosocial support is love, care and protection. It is support for the emotional and social aspects of a child's life, so that they can live with hope and dignity.

All services for children can and should be delivered in a way that takes account of their psychosocial wellbeing. Psychosocial support includes:

- Ensuring the participation of children in issues affecting them
- Allowing children to express their feelings and needs
- Listening and responding to children's problems
- Ensuring that children are safe and secure
- Helping children to appreciate their history and identity
- Encouraging children to set goals and reach their potential
- Ensuring that children have positive relationships in their lives
- Providing life skills for children and youth

Psychosocial support is best provided by families and communities.



Message from the Board Chairperson



This year REPSSI celebrated 10 years as the leading African organization in psychosocial support work. Following the board launch of REPSSI @10, a number of events took place in the countries where REPSSI operates including a high level international commemoration held on the sidelines of the 2012 edition of the International AIDS Conference in Washington DC. This year's Novartis Foundation Symposium further profiled REPSSI work globally as

our achievements over the last 10 years were heralded in this global event, drawing attention to psychosocial approaches and interventions for mental health and psychosocial wellbeing for vulnerable children in Africa.

In order to address growth demands and realise diversified funding for its programmes, the organization this year embarked on organizational development, change management and social enterprise processes that seek to also enhance REPSSI efficiency. This will come out of application of a social business model, systems and procedures; better alignment of financial and human resources to shifting organizational strategy and leveraging on the success of the past ten years to expand the REPSSI business in the next decade and beyond.

In the last year, we continued to extend our influence in child focused social development policies, programmes and strategic frameworks. This has been possible through continued active advocacy engagement with SADC and the EAC. For SADC REPSSI supported the completion of Implementation Guidelines for the

Minimum Package of Services for Orphans, other Vulnerable Children and Youth while support to the EAC entailed providing technical input to the Children's Policy. REPSSI's contribution in knowledge management and civil society advocacy work also continued through the Regional Inter Agency Task Team on Children and AIDS (RIATT) and the Coalition for Children Affected by AIDS.

I am delighted to note that in recognition of her high level contribution and notable commitment in the child rights sectors, the Executive Director, Noreen Huni was nominated to represent the Coalition of Children Affected by AIDS (CCABA) within the World Health Organization Civil Society Reference Group on HIV. In addition to this, she was awarded the VSO RAISA Humanitarian award for her commitment to health, HIV and AIDS in the Southern African region.

My sincere gratitude goes to the REPSSI international cooperating partners (ICPs) for their continued support and commitment to the REPSSI vision. REPSSI's success in the past decade has been made possible through funding by partners – Sweden/NORAD, Swiss Agency for Development and Cooperation, Novartis Foundation for Sustainable Development (NFSD), Australian Aid and UNICEF. I also acknowledge REPSSI's new funding partners: Symphasis, Comic Relief, USAID, Stanbic in Botswana, the First National Bank in Namibia; and RATN. Through such ongoing valuable support and high dedication of REPSSI staff, I have no doubt that REPSSI is poised for an exciting and fulfilling phase of growth, expansion and influence, building on the success of the last decade.

Mr. Kaumbu Mwendela, REPSSI Board Chairperson



Message from the Executive Director



This year marked ten years of REPSSI existence and work! It has been a year filled with excitement, bringing to focus the immense work and effort put towards ensuring REPSSI grows from strength to strength. At this organization's developmental stage, the need to venture into new ways of thinking and implementing the REPSSI programme takes precedence in order to be more focused, efficient and effective.

REPSSI has therefore embarked on organizational development, change management and social enterprise (SE) processes. The team has taken all this in stride and the changes that will inevitably have to be administered have been registered. Moving forward, REPSSI will be growing its African footprint via the current strategy and will build the new structure from existing strengths and address current weaknesses.

Today, together with our partners and with the support of our funding partners, we have placed psychosocial support (PSS) on national, regional and global child care and development agendas. REPSSI is a technical partner to the Southern Africa Development Community (SADC) and has trained a pool of regional experts in the field, including caregivers, teachers, youth and communities at large, enabling them to use our culturally-appropriate tools. An innovative distance-learning course has 1,429 graduates in ten countries and an additional 872 students currently enrolled in the programme. We will continue to leverage on the growing Social Service Workforce strengthening agenda to promote the certificate programme. In the past ten years, over five million children have been reached through our network of partners in the

13 countries with REPSSI presence. Our advocacy effort has seen the placement of a Geneva-based REPSSI representative to strengthen our global engagement.

In the last year, REPSSI developed a teachers' diploma programme in partnership with regional experts and this is being delivered to 496 teachers in partnership with the Ministry of Education, Science, Vocational Training and Early Education in Zambia. REPSSI has also been awarded a grant by USAID of USD3 580 509 for a four-year project in South Africa that aims at strengthening the mainstreaming of PSS within service delivery for orphans, vulnerable children and youth.

In consultation with our partners, the REPSSI programme Monitoring, Evaluation and Learning (MEL) framework was redesigned, defining the different level indicators. The psychosocial care and support assessment tool was also further refined to align with the PSS mainstreaming requirements. The current programme strategy is due for a mid-term review in 2013.

In pursuit of scientific evidence on REPSSI tools, REPSSI conducted impact evaluation and research on the *Journey of Life* (JoL) in Namibia and in Ethiopia, where the tool was translated to Amharic, to examine pre- and post-exposure data. The importance of programme support following a JoL training workshop is a key lesson. In response to the findings of the research collaboration with Swiss Academy for Development and ChildFund Zambia, REPSSI has limited access to the tools by, for instance, withdrawing the free download function from our website. We are also insisting on sequencing of training to ensure that facilitators of certain tools have sufficient background and connections to caregivers and other support mechanisms in the community to be able to support



children adequately. The tools are constantly being revised, tested and further improved. To better understand the findings of the research, REPSSI is conducting further analysis of the rich data set.

Although the social enterprise unit is not yet fully developed, total receipts as at end of 2012 were €146 468. In 2013, a SE consultant will continue assisting REPSSI to adopt Social Enterprise principles as well as facilitating the development of a business model as REPSSI will be targeting new funding opportunities.

In 2013 REPSSI will continue to facilitate a coordinated regional response to the multidimensional issues confronting children and youth. This will be lead through the Regional Interagency Task Team (RIATT) and close relations with SADC and the EAC. In all the SADC countries in which REPSSI is active we will support governments to domesticate the SADC Minimum Package of Services and accompanying PSS Conceptual Framework and also to ensure implementation of domestic policies so that children and youth benefit from these. In East Africa REPSSI will actively support the EAC to develop and disseminate the Children's Policy. We anticipate much greater exposure of REPSSI and PSS in general through the 2013 PSS Forum, to be held in Nairobi, under the banner of *Integrating Psychosocial Support in Child Protection Systems*.

REPSSI also plans to expand on regional partnerships, leveraging each partner's comparative advantage to build a stronger regional response. Some of the regional partnerships that we are strengthening are with: the International Federation

of the Red Cross particularly around issues of home based care and emergency response; MiET Africa in mainstreaming PSS into the education sector; VSO RAISA in developing new ways of responding to the issues of children and youth; Save the Children on issues of children's sexuality; UNESCO on supporting teachers to help children and youth to learn about sexuality; and RATN on capacity building for CBOs (including mainstreaming of PSS into their programmes). The development of REPSSI social business enterprise will remain a priority in 2013.

In conclusion, I would like to acknowledge the board of directors' support which has been exceptionally valuable as they remain committed and provide guidance. I would also like to thank REPSSI's international cooperating partners (ICPs) for their continued support for the programmes of REPSSI. Finally, REPSSI staff members have been crucial in rolling-out and sustaining the above-mentioned achievements. Appreciation is extended for their immense work and untiring efforts towards ensuring delivery in pursuance of the REPSSI vision.

Noreen M. Huni



REPSI@10

A meeting at Masiye Camp, Zimbabwe in 2001 resulted in the Regional Psychosocial Support Initiative, REPSI, being founded in 2002 to address the social and emotional needs of children across Africa. Ten years later, REPSI has become more than just an initiative, providing critical technical assistance to governments, development partners, international organizations and NGOs to enable them to support families and communities to love, care and protect all children. Today, REPSI is a leader in psychosocial support for the region.

To mark this milestone, REPSI launched the “REPSI@10” campaign, to acknowledge the longstanding support of its funding partners, local implementing partners and government ministries across 13 countries at the Annual General Meeting held in May in Johannesburg, South Africa. The publication *Voices of*

Hope and Change, available at https://www.repsi.org/?p=1027&option=com_wordpress&Itemid=64, was released to chronicle the changes that have resulted for children and their families from REPSI’s work in this decade.

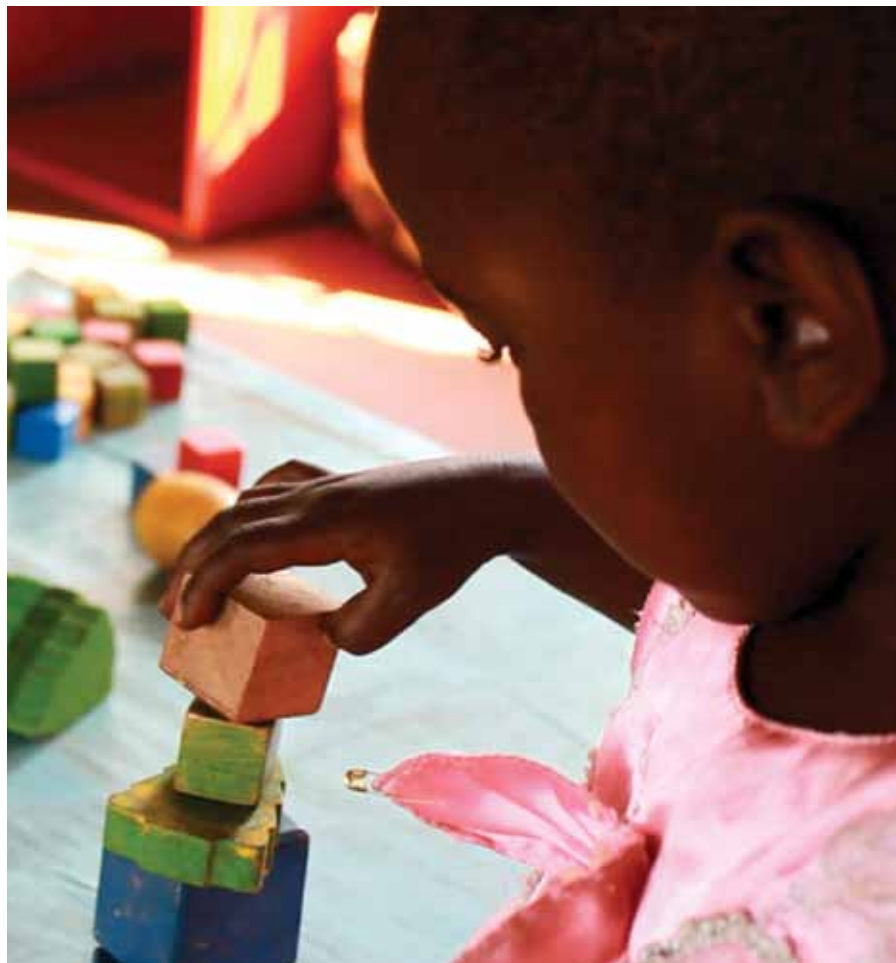
This was followed by a REPSI@10 reception in conjunction with the CCABA symposium in Washington, D.C. in July attended by over 70 delegates from the donor community, civil society, academia, the United Nations, international cooperating partners, national governments, and community-based organizations. The reception highlighted the international contribution REPSI has made in the past decade and positioned it for increased recognition, influence and growth as an African initiative that has evolved into a global contributor in the area of psychosocial support for children.



In-country events in Uganda, Kenya, Tanzania, Swaziland, Malawi, Mozambique, South Africa, Namibia and Zimbabwe focused on the value of REPSSI's technical support to partner organizations and government ministries as well as the impact that this has had at community and individual level. Participation of children was highlighted in some countries such as Malawi where the REPSSI@10 event was held at a local primary school.

The Novartis Foundation symposium in December on *A Generation at Risk: Psychosocial Support for Africa's Children*, which highlighted REPSSI as a model of good practice in linking community level practice to global advocacy, was the climax of the year long activities. 500 international delegates to the symposium learnt about the importance of PSS for children in Africa which is provided by the work of REPSSI. A book which documents REPSSI's history and achievements, *Africa's Orphaned Generations: it takes more than a village to raise a child*, by Richard Gerster (supported by the NFSD) was launched at the symposium. The English version of this book is available for free download from: <http://www.novartisfoundation.org/mandant/apps/publication/index.asp?MenuID=269&ID=611&Menu=3&Item=46>.

REPSSI can now provide evidence of impact. The organization will build on its solid experience, momentum and credibility from the last decade to expand its work and contribution in PSS expertise, knowledge and dialogue. REPSSI will advocate that PSS be situated within all social protection, education and health services and programmes. REPSSI will also provide guidance to address emerging psychosocial issues of specific groups such as adolescents, young children, children living with HIV, children with disability and children in adversity as well as specific issues such as children's sexuality and sexual reproductive health of adolescents.





Teachers' Diploma

In 2009 REPSI launched the Certificate Course in Community-Based Work with Children and Youth (CBWCY), as a situated and supported distance-learning (SSDL) course to respond to the critical regional demand for quality training in child support, and specifically psychosocial support, child protection and promotion of children's rights. The programme is quality assured by the University of KwaZulu-Natal and is currently available in nine countries.

The Teachers' Diploma in Psychosocial Care, Support and Protection was developed in collaboration with MiET Africa, the Children's Institute of the University of Cape Town and reviewers from Lesotho, Swaziland, Tanzania and Zambia, in response to demand from teachers for training in Psychosocial Support within the school context.

The six modules of the course are:

1. Building blocks for a caring school
2. Realizing your Potential as a Champion for Children
3. Realizing the Potential of Children and Youth
4. Realizing the Potential of your Classroom
5. Realizing the Potential of your School
6. School and Community Partnerships to Realize Children's Potential

A fundamental underpinning of the course is that all children have strengths and also challenges. Teachers are encouraged to work together and with others to partner with children and their families to build on their strengths and address their challenges. Cross-cutting issues include children's rights, protection and safety, gathering and using data for planning, gender, HIV and disability.

The intention of this programme is to strengthen the school in terms of its organization, relationships between the school and teachers and learners, their families and the community; as well as improved learning environment. This will create a caring and protective environment which will improve education outcomes – access, retention and achievement.

496 teachers (267 males and 229 females) from 183 basic, 16 community and 19 secondary schools began training in the Teachers' Diploma in Zambia on the 31st December. The programme is being evaluated, in a randomized control trial with comparison between teachers who are on the programme in 2013 and their learners and teachers who have not begun, but will begin in 2015. The results of the evaluation will inform improvement of the programme and will be shared with other countries in the SADC region for possible adoption of the programme there.







REPSSI – providing innovative ways to strengthen the Social Service Workforce

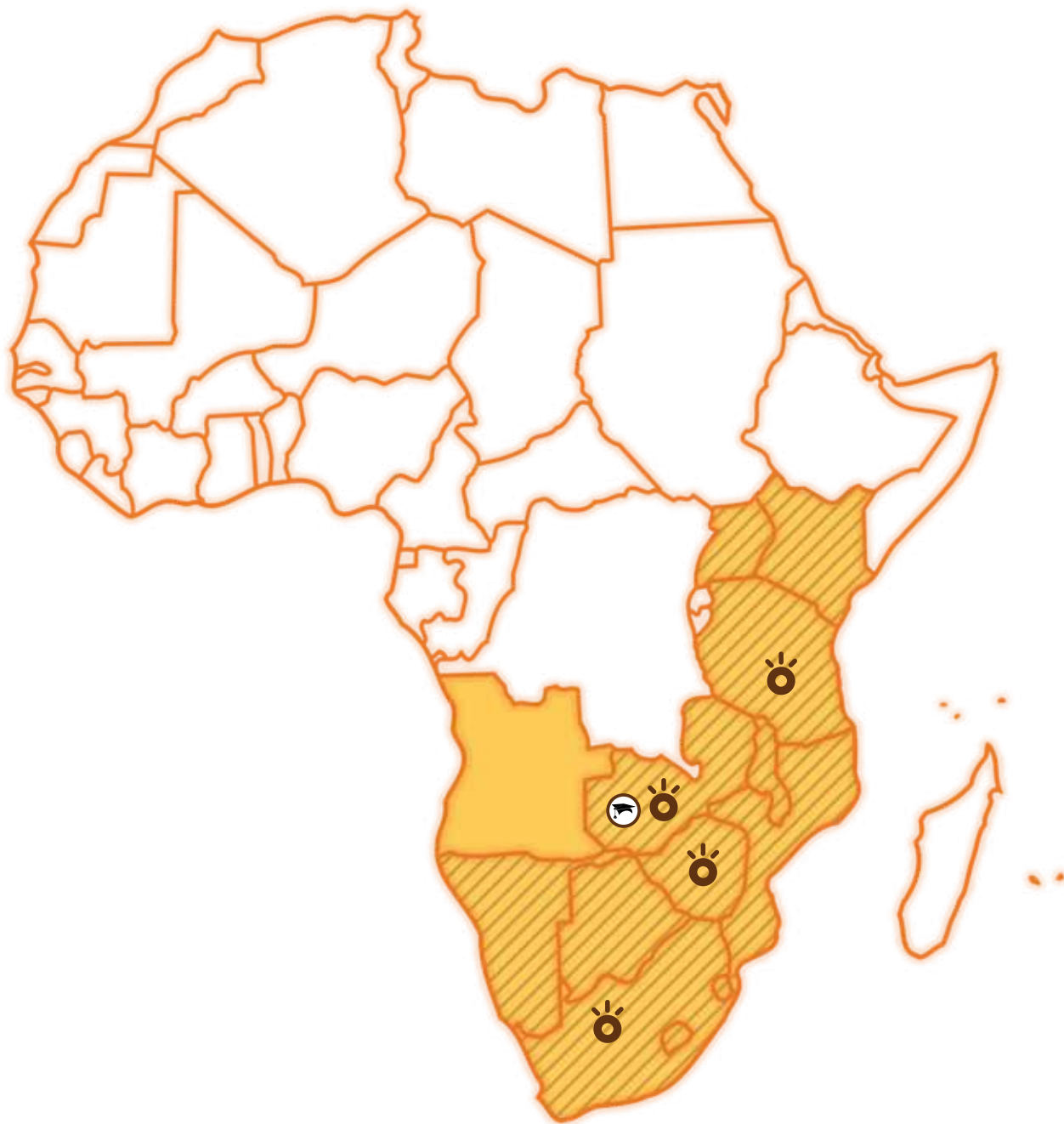
Overall statistics

Number of children reached through partner organisations in 2012: 1,490,363 (849,826 female; 640,537 male)





Number of people trained in PSS: 8,170 (5,006 female; 3,164 male)

Number of CBWCY cycle 2 graduates: 934 (488 female; 471 male; 6 not specified)

Number of CBWCY cycle 3 enrolees: 872 (384 female; 414 male; 40 not specified)



MAP KEY

-  Countries REPSSI works in
-  CBWCY cycle 2 and 3
-  Teachers Diploma
-  REPSSI Office



Country Profiles

In this section you find highlights of REPSSI partners and progress in each country

Angola

FACT FILE

- Government (Ministry) partnerships: Instituto Nacional da Criança (National Children's Institute – INAC)
- Major Civil Society Partners: 2
 - World Vision and
 - UNICEF
- Children reached: 4,000 (2,266 female; 1,734 male)

REPSSI and INAC have applied to BP in Angola for funding to train 90 local caregivers from 3 provinces in PSS. It is anticipated that 9000 children will be supported through this programme.

The work in Angola, has a visible impact, commendable and meritorious, because of contributions in training of the main social actors, such as civil society (communities, NGO's, member of church's) and government, which are intervening to provide psychosocial care and support to children who are affected by HIV and AIDS, conflict and poverty. REPSSI has also been able to influence specific policies to improve the understanding of what is psychosocial care and support, and especially in the framework of the 11 commitments of the children in Angola.

JOSE FERNANDES, BP ANGOLA

Botswana

FACT FILE

- CBWCY (in conjunction with BOCODOL)
 - 76 cycle 3 students enrolled (61 female; 15 male)
 - Certificate has been accredited with the Botswana Training Authority (BOTA)
- Government (Ministry) partnerships: Department of Social Services (in Ministry of Local Government and Social Services). A draft MoU is under consideration
- Major Civil Society partners:
 - Marang;
 - PCI;
- A national roll out Journey of Life is being spearheaded by the DSS, PCI and Marang, with funding from USAID and the Government of Botswana
- 10% of decentralized funding from DSS to districts is earmarked to support PSS activities
- Many district level plans are being developed and supported through the decentralized funding
- Children reached: 10,000 (6,102 female; 3,898 males)
- REPSSI was registered in Botswana during 2012

Quotations on the impact of the Journey of Life in Botswana:

"I used to think I was poor and believed that I could not give, but now I realise that I can give back in other ways that do not require money, by giving love and encouragement."

CAREGIVER

"It is like a gap has been filled. It is now a triangle of the child, the parent and the teacher. Not only the teacher and child anymore."

TEACHER

"It is all about personal values. We have developed love, motivation and passion to serve. Through the Journey of Life we remembered the problems we had as children. This awareness motivates us to help our children."

NGO STAFF MEMBER

Kenya

FACT FILE

- CBWCY (Cycle 2)
 - 104 cycle 2 graduates (53 female; 51 male)
- Government (Ministry) partnerships: Ministry of Gender, Children and Social Development
- Major Civil Society Partners: 5
 - Child Fund Kenya,
 - Hope Worldwide Kenya ,
 - Kenya Orphans Rural Development Program (KORDP),
 - Kibera Community Self Help Programme(KICOSHEP),
 - Kenya Aids NGOs Consortium (KANCO)
- Children reached: 98,326 (56,049 female; 42,277 male)

REPSSI has become a member of the National Child Protection Working Group

"I survive today because there are people who take care of me; I survive because I was rescued from the hazardous environment which had made my life full of pain. I feel emotionally relieved like a person who carries a big burden and suddenly one comes in between to carry on behalf."

A CHILD LIVING WITH HIV

“REPSSI you are needed more than you know. I think you are an answer to many problems families, communities and organisations are experiencing. Please do more. Valuing people and treating them with respect comes from PSS.”

KATHLEEN OKACHA EXECUTIVE DIRECTOR, KORDP



“I started a Memory Book last year. I did it with my grandmother. It tells the whole story of my life-how I grew up, who I am, where I come from, my problems in life and who helps me through my problems. The book keeps me motivated and helps me to live on.”

A 17 YEAR OLD GIRL SUPPORTED BY RED CROSS LESOTHO

Lesotho

FACT FILE

- CBWCY
 - 102 cycle 2 graduates (77 female; 4 male; 4 not specified)
 - 116 cycle 3 students currently enrolled (85 female; 30 male)
- Government partnerships: Ministry of Social Development - MoU signed in May, 2012
- Major Civil Society Partners: 3
 - TRA,
 - Lesotho Red Cross Society,
 - NGOC
- Children reached: 71,138 (43,000 female; 28,138 male)
- PSS Resource Guidelines, developed with UNICEF and Ministry of Social Development were finalised in 2012
- 22 social workers trained by TRA as part of operationalising the PSS Resource Guidelines
- REPSSI facilitated the localisation of the SADC Minimum Package of Services in Lesotho and the incorporation of PSS into the new Strategic Plan for Vulnerable Children 2012-2016

Malawi

FACT FILE

- CBWCY (together with Magomero College)
 - 102 cycle 2 graduates (61 female; 41 male)
 - 88 cycle 3 students currently enrolled (31 female; 54 male)
 - Pursuing opportunities for local accreditation.
- Government partnerships: Ministry of Gender, Child Development and Social Welfare; Ministry of Youth Development and Sports
- Major Civil Society Partners: 2
 - MAGGA
 - Consol Homes
- Children reached: 19,563 (11,048 female; 8,515 male)

Establishment of REPSSI: the establishment of Country Programme Advisory Board is at an advanced stage and a separate REPSSI office has been opened.

Relationship with Ministry of Gender, Child Development and Social Welfare - Member of PSS Sub-Committee, INGO Forum, and the Impact Mitigation TWG
With support from UNICEF, the Ministry of Gender, Child Development and Social Welfare is rolling out the Journey of Life.

“The ideas imparted to me through the self defence training have given me confidence and made me realise that I can stand up to anything. When I fall, I will pick myself up and keep going.”

FORM 4 GIRL AT LILONGWE GIRLS SECONDARY SCHOOL, WHO IS PART OF THE MAGGA PROGRAMME AND HAS DIRECTLY TRAINED ABOUT 60 OTHER GIRLS IN SELF DEFENCE



Mozambique

FACT FILE

- CBWCY
 - 8 cycle 2 graduates (4 female; 4 male)
- Government (Ministry) partnerships: MMAS – Ministry of Women and Social Action, Ministry of Education and Culture, Ministry of Health
- Major Civil Society Partners: 8
 - Save the Children
 - World Vision
 - ICDP
 - Wona Sanana
 - TdH
 - Casa Amiga de Crianca
 - UNICEF
 - FHI360
- Children reached: 177,412 (88,939 female; 88,473 male)
- In the process of seeking registration

TRAINING: 113 FHI partners (39 Female and 74 Male) and 85 UNICEF partners (45 Female and 40 Male) received two weeks training that was fully paid for by these partners.

“I am now a changed leader, before participating in the Journey of Life training I used to be a boss but I now know how to engage teachers and parents for the betterment of the school”

JOAO ANTONIO DODA- CHIPINDAUMWE PRIMARY SCHOOL DIRECTOR

ACAC has gained institutional visibility within its beneficiaries as an institution providing technical support for organizations working with children in Beira as result of REPSSI contribution and presence within ACAC.

DR. MEIRINHO VILANCULOS, DIRECTOR, ASSOCIAÇÃO CASA AMIGA DA CRIANÇA - BEIRA

One of the gains is the issue of disclosure, since most people living with HIV, and particularly women were not disclosing their status to their family members, fearing they would be blamed and eventually would lose their marriages. However after this training, the activists are now able to convince those living with HIV and AIDS, both women and men to disclose their status.

HIPOLDO FRANCISCO, FHI PARTNER TRAINED IN MOAMBA

Namibia

FACT FILE

- CBWCY (in conjunction with NAMCOL)
 - 42 cycle 2 graduates (5 female; 37 male)
 - 70 cycle 3 students currently enrolled (15 female; 52 male)
- Government partnerships: Ministry of Gender Equality and Child Welfare (MGECW)
- Major Civil Society Partners: 5
 - CAFO
 - CAA
 - Phillippi Trust
 - LLCL
 - Red Cross
- Children reached: 65,650 (35,249 female; 30,401 male)
- Registration achieved in 2012
- REPSSI is a member of the Permanent Task Force & Impact Mitigation TAC (directive from Cabinet) coordinated under the MGECW

Private sector partnership was entered into with FNB (\$115 000 over three years) to support 20 CBWCY students at NAMCOL with Tuition fees on an annual basis, and LLCL to improve skills and knowledge of their Councillors.

MGECW partnered with LifeLine/ChildLine (LLCL) to train 525 Community Child Care Workers from MGECW including staff and volunteers from the NGO sector in Journey of Life throughout the country through funding from Global Fund.

A retrospective assessment of the impact of the Journey of Life was conducted with CAA and CAFO

“Governments have a crucial role to play in providing education, protection, food security, social protection and health services that meet the rights of children and youth and in enacting policies that promote their psychosocial wellbeing, and the integrity and stability of their families; however, the government cannot do this alone; it is the moral obligation of corporate institutions such as FNB Namibia to support the government in this huge task”.

MS. JANE KATJAVIVI, FNB FOUNDATION CHAIRPERSON, NAMIBIA

South Africa

FACT FILE

- Government partnerships: Department of Social Development; Department of Health,
- Major Civil Society Partners: 2
 - NMCF
 - SARCS
- Children reached: 220,004 (115,073 female; 104,931 male)
- REPSSI participated through the NACCA steering committee in finalising the new National Plan of Action 2012-2016
- REPSSI was nominated to co chair NACCA steering committee representing civil society organisations & chairs the PSS reference team of NACCA
- Finalised and launched PSS Conceptual Framework for South Africa in October and 10,000 copies were disseminated to all the nine provinces.
- Partnership letter was signed with Department of Health to provide support in the technical working group on Paediatric and Adolescent HIV and TB
- Through the TWG REPSSI provided technical support to the Department of Health in the development of *Pediatric and Adolescents Blueprint for Action* which will guide implementation of national programmes.
- In October a meeting to review M&E indicators was held for all government partners from South Africa, Swaziland and Lesotho.
- REPSSI was awarded a USAID grant of \$3580509 over 4 years to support the mainstreaming of PSS into DSD programmes and to train 1200 community caregivers in Kwa Zulu Natal in the CBWCY

Swaziland

FACT FILE

- CBWCY (in conjunction with UNISWA)
 - 119 cycle 2 graduates (30 female; 89 male)
 - 106 cycle 3 students currently enrolled (25 female; 79 male)
- Certificate has been accredited by UNISWA, with additional core modules
- Government partnerships: NCCU Swaziland, Ministry of Education
- Major Civil Society Partners: 3
 - Save the Children Swaziland
 - UNICEF
 - UNISWA
- Children reached: 235,000 (132,000 female; 103,000 male)
- Evaluation of the CBWCY Certificate programme is being conducted by UNISWA
- REPSSI is a member of the PSS technical working group.

The Royal Swaziland Police reported that before the certificate there were complaints in the manner in which victims were handled, but now graduates know how to handle victims. Graduates no longer handle victims of abuse as if there were criminals. Graduates have patience and are calm with victims of abuse. The Graduates understanding of how to operate is different from those who have not been a part of the programme and now they differentiate between "Police Force and Police Service", placing emphasis first on service. The results are contributing in people believing in the Royal Swaziland Police Service and wanting to use their services when the need arises.

Tanzania

FACT FILE

- CBWICY (in conjunction with the ISW)
 - 103 cycle 2 graduates (46 female; 57 male)
 - 80 cycle 3 students (45 female; 35 male)
- Government partnerships: Ministry of Health and Social Welfare
- Major Civil Society Partners: 6
 - FHI Pamoja Tuwalee program,
 - Africare Pamoja Tuwalee program,
 - PASADA,
 - HUMULIZA,
 - Salvation Army Tanzania Territory,
 - CAMFED Tanzania
- Children reached: 119,227 (65,183 female; 54,044 male)

REPSSI participated in review of the Tanzania National Costed Plan of Action for Most Vulnerable Children - 2013 to 2017 which includes PSS as one of the thematic areas and a crosscutting area for other thematic areas

Training: 87 females and 91 males received REPSSI training that was fully paid for by Africare, CAMFED and Amani Children's home. A further 22 females and 18 males received REPSSI training that was cost shared between REPSSI and FHI 360 and PASADA.

“REPSSI has assisted PASADA to be creative in the supporting of HIV and AIDS affected children. Previously HIV and AIDS affected children were reluctant to talk about their status. But the PSS intervention has enabled children to talk about their status very positively and most of them are living positively. The children who are introverted have been supported through ART Work. This activity of artwork has been assisting them talk about their life through drawing. This is a big tool to express inner feelings of the loss that the child is experiencing.”

PASADA (REPSSI PARTNER)



Uganda

FACT FILE

- CBWCY (in conjunction with NSAMIZI Institute of Social Development)
 - 120 cycle 2 graduates (66 female; 54 male)
 - 85 cycle 3 students (50 female; 35 male)
 - Course accredited with the Uganda National Higher Education Authority
- Government: Ministry partnerships: Ministry of Gender, Labour and Social Development, Ministry of Education and Sports
- MoU with Ministry of Gender Labour and Social Development has been signed.
- Major Civil Society Partners: 9
 - Nsamizi Institute of Social Development
 - Child Fund International Uganda
 - Transcultural Psychosocial Organization (TPO) –Uganda
 - World Vision International – Uganda
 - Child Restoration Outreach (CRO) – Uganda
 - Kitovu Mobile Masaka
 - Uganda National Health Users’/Consumers’ Organization (UNHCO)
 - HiPO – Africa
 - International HIV/AIDS Alliance – Uganda
- Children reached: 216,786 (126,708 female; 90,078 male)

TRAINING:

- Trained 14 (3 females and 11 Males) District probation and Welfare officers from Ministry of Gender Labour and Social Development in Intro to PSS
- Trained 14 Partner Organization staff (TPO, CRO, Child Fund and Kitovu mobile) in JOL.
- 12 Ministry of Gender Labour and Social Development senior staff in PSS M &E.

REPSSI registration in Uganda is at an advanced stage.

FUNDRAISING

- Secured \$50,000 from RATN to implement a 9 months project in Kitgum district “Strengthening Community Systems to Increase Access to HIV and AIDS Interventions by Women and Girls”.

“REPSSI’s 10 years anniversary also marks 10 years in which Kitovu Mobile has benefitted from technical assistance from REPSSI. You can see all our programmes have mainstreamed PSS and this has benefitted us as an organization as well as those that we assist, for example we have been able to reach out to many children through kids clubs and Hero books programmes and caregivers with PSS; and there is a lot of change.”

JOSEPH WALUSIMBI, KITOVU MOBIE (REPSSI PARTNER)



Zambia

FACT FILE

- CBWCY (in conjunction with Mindolo Ecumenical Foundation)
 - 112 cycle 2 graduates (72 female; 40 male;)
 - 150 cycle 3 students currently enrolled (55 female; 87 male; 8 not specified)
- Teachers' Diploma (in conjunction with NISTCOL, Mongu College of Education and Chipata College of Education)
 - 496 teachers recruited for the Diploma course (229 female; 267 male)
- Government partnerships: Ministry of Education, Science Vocational Training and Early Education (MESVTEE); Ministry of Community Development and Mother and Child Health
- MoU with the MESVTEE is at an advanced stage
- Major Civil Society Partners: 6 –
 - ChildFund,
 - Kondwa Home Based Care,
 - Kafue Child Development Association,
 - CAMFED,
 - Read to Succeed
 - UNICEF
- Children reached: 161,711 (117,638 female; 44,073 male)

“I now know the children’s rights and I am able to care for them properly and follow up issues of child abuse with their families”.

JOHN ZIBA, CBWCY CERTIFICATE COURSE STUDENT, LUNDAZI DISTRICT

A REPSSI (Zimbabwe) Board member said, “The certificate program is very important when it targets people in the community. It is in the community where we find children that we protect and care for.”

Zimbabwe

FACT FILE

- CBWCY
 - 120 cycle 2 graduates (58 female; 62 male)
 - 96 Cycle 3 students currently enrolled (40 Male, 56 Female)
- Government partnerships: Ministry of Health and Child Welfare and Department of Social Services;
- Major Civil Society Partners: 16
 - Zimbabwe National Family Planning Council (ZNFPC)
 - Batanai HIV and AIDS Services Organisation (BHASO)
 - Community Working Group on Health (CWGH)
 - Million Memory Project in Zimbabwe (MMPZ)
 - Farm Community Trust of Zimbabwe (FCTZ)
 - Midlands AIDS Services Organisation (MASO)
 - Farm Orphan Support Trust (FOST)
 - Zimbabwe National Council for the Welfare of Children (ZNCWC)
 - Youth for a Child in Christ
 - Hope for a Child in Christ
 - Souls Comfort
 - Bethany Project
 - Masiye Camp
 - Matebeleland Aids Council
 - Child Protection Society (CPS)
 - Batsirai
- Children reached: 91,546 (50,571 female; 40,975 male)
- Registration as a PVO achieved
- Telecel Donation towards REPSSI@10 commemorations - \$2000



REPSSI Financial Report 2012

FINANCIAL STATEMENTS FOR THE YEAR ENDED 31 DECEMBER 2012

Statement of Financial Position

	2012 (Euro)	2011 (Euro)	2010 (Euro)
Assets:			
Non-Current Assets			
Property, plant and Equipment	174 904	154 211	62 138
	174 904	154 211	62 138
Current Assets:			
Trade and other receivables	369 752	51 153	75 074
Cash and cash equivalents	3 091 520	2 037 251	1 954 569
	3 461 272	2 088 404	2 029 643
Total Assets	3 636 176	2 242 615	2 091 781
Equity and Liabilities			
Equity			
Retained income	961 257	771 310	555 792
Liabilities			
Current Liabilities			
Operating lease liability	6 301	6 645	4 129
Trade and other payables	194 752	186 657	244 276
Deferred income	2 473 866	1 278 003	1 287 584
	2 674 919	1 471 305	1 535 989
Total Equity and Liabilities	3 636 176	2 242 615	2 091 781

Statement of Comprehensive Income

	2012 (Euro)	2011 (Euro)
Revenue	3 970 997	3 564 493
Other income	173 742	242 118
Operating expenses	(3 959 185)	(3 595 344)
Operating surplus	185 554	211 267
Investments revenue	4 393	4 251
Surplus for the year	189 947	215 518
Other comprehensive income	-	-
Total comprehensive income	189 947	215 518



INCOME

REPSSI received 110% of the total budgeted income for the financial year. This was as a result of the following reasons:

- Income of €106,230 received from specific projects had not been anticipated at the beginning of the year.
- The entire 5 year period budget for monitoring, evaluation and research activities of €625,495.00 from Comic Relief was received once in 2012.
- Some of the funding was received at favourable exchange rates.

Basket Income

Sweden and Norwegian Agency for Development Cooperation (Sweden/NORAD)

Expected annual income of SEK17'000'000 was received as a once off transfer from Sida in July 2012 following the submission of audited financial statements for the end of the previous funding phase. Income was received at the rate SEK8.64: €1 which led to exchange gain of 8% on budgeted income as the exchange rate at budgeting time was SEK9.62: €1. This means that the Swedish Kroner had strengthened since the time of budget. 12% of income received from Sida is for the RIATT project. The RIATT project is aligned to the same three (3) year period as the REPSSI agreement.

Swiss Agency for Development and Cooperation (SDC)

66% of expected income for 2012 was received. The budget of €1,219,512.00 included an amount of €577,920.89 relating to the previous funding phase. There was non-clarity on the payment conditions of this amount. Following discussions

between REPSSI and SDC, an amicable solution resulted in SDC paying €141,906 of the prior phase amount.

Novartis Foundation for Sustainable Development (NFSD)

By the end of the year, REPSSI had claimed all the expected income in accordance with the milestones agreed for 2012. Of the funds claimed, \$75'000 (7%) had not been received but was recognised as income due for 2012. Income received from Novartis in 2012 formed part of the basket funds. The contract with NFSD is performance based, wherein release of funds is contingent to achievement of agreed milestones.

EXPENDITURE

Budget Revision

At midyear 2012, REPSSI sought permission to revise the budget downwards by 19% from €5'400'967 to €4'349'659 when it became apparent that some activities would not be possible to achieve during the course of year. Reasons contributing to the budget revision included:

- Delays in the commencement of Cycle 3 certificate, wherein the relationships between REPSSI, UKZN and Africa Centre for Childhood had to be reviewed following the end of AusAID funding contract.
- Resignation of 3 members of staff in the half year and the resignation for the RIATT focal person.
- Some planned IT activities were subject to successful achievement of accreditation which was clearly not going to be achieved in 2012.



Budget Utilisation

An overall budget utilisation of 86% of the revised budget was achieved during the financial year. 83% utilisation was from the basket funds, 91% from Comic Relief, 100% from AusAID and the lowest was for the RIATT-ESA project at 51% budget utilisation. The expenditure summary above highlights reasons for under utilisation in some budget lines.

It is expected that the budget utilisation rate will rise to about 90% once depreciation and provisions for staff costs and other relevant adjustments are effected. Carry over of funds that were allocated for the full certificate cycle of 18 months. Part of the carry over for the certificate is budgeted for in 2013 and a part will be carried forward to 2014 when the cycle

Joint Financial Arrangement (JFA)

Once again the year came to an end without a signed JFA among for the International Cooperating Partners (ICP). Changes within the ICP policies on funding durations are not favourable to signing JFAs anymore. It is believed that the funding partners will once again acknowledge the existing "JFA Style" operating arrangements as they have existed over the years.

Statutory Compliance

The USAID Pre Award Risk assessment highlighted the need for REPSSI to register with Compensation Commissioner in South Africa. The "Compensation fund" exists to compensate employees in the event of occupational injuries, death or diseases sustained at work. The Compensation Commissioner assessed REPSSI for the period

2008 to 2011 and levied a fee of ZAR147 514.38 which was paid. At the time of registration under Section 21 Company in February 2005, registering with the fund was not compulsory and when it became compulsory, REPSSI remained unaware of the requirement. The return for 2012 is due before the end of March 2013.

The Foreign Exchange Risk

The Rand was generally weaker against other foreign currencies (US \$, Pounds, and CHF) in the current financial year favouring the operations in South Africa where the Secretariat is situated. The currencies for Zambia and Tanzania were weaker against the dollar and Euro resulting in favourable exchange rates. To mitigate foreign exchange risks, REPSSI has been paying all the invoices charged in foreign currencies using offshore bank accounts and all local payments were done from local bank accounts.



List of REPSSI Partners

REGIONAL & STRATEGIC PARTNERS

- Southern African Development Community (SADC)
- East African Community (EAC)
- Regional Inter-Agency Task Team (RIATT) for children affected by HIV
- Regional AIDS Training Network (RATN)
- Regional African AIDS NGOs Network (RAANGO)
- VSO Regional AIDS Initiative of Southern Africa (VSO-RAISA)
- African Network for the Promotion and Prevention of Child Abuse and Neglect (ANPPCAN)
- International Federation of Red Cross and Red Crescent Societies (IFRC)
- Save the Children Sweden
- ChildFund
- MiET Africa
- Southern Africa AIDS Trust (SAT)
- University Research Co (URC)
- UNICEF – ESARO
- MHPSS Reference Task Team
- Swiss Academy for Development (SAD)
- Wayne State University (WSU)
- University of Zambia
- RuralNet
- FIDA (Missions & Development Co-Operation Organisation, Pentecostal Churches of Finland)
- World Vision International

REPSSI BOARD OF DIRECTORS

Dr Lucie Cluver
Dr Stefan E. Germann
Ms Noreen M. Huni
Dr Constance Kganakga
Justice Euna Makamure (*Vice Chairperson*)
Ms Cynthia Mapaure (*Treasurer*)
Mr Kaumbu Mwondela (*Chairperson*)
Dr Lewis Ndhlovu
Ms Jeanne Ndyetabura
Ms Pelucy Ntambirweki
Ms Nyambura Rugoiyo
Prof Lorraine Sherr



REPSSI'S INTERNATIONAL COOPERATING PARTNERS

REPSSI would like to thank our International Cooperating Partners for their continued support:

- Swiss Agency for Development and Cooperation
- Sweden / Norad
- Novartis Foundation for Sustainable Development (NFSD)
- Comic Relief
- USAID
- Australian Aid
- Symphasis
- First National Bank (Namibia)
- Stanbic (Botswana)
- Regional AIDS Training Network
- UNICEF

COPYRIGHT

© REPSSI is the copyright owner of all material contained in this publication, with the exception of any information, photographs or material attributed herein to other sources.

In terms of the South African Copyright Act, No. 98 of 1978, no part of this publication may be reproduced or transmitted in any form or by any means, electronic or mechanical, including photocopying, recording or by any information storage and retrieval system, without prior permission in writing from REPSSI, or, where the aforementioned photographs or material are concerned, from the relevant copyright holder.

This publication must be attributed with the words: REPSSI (2013), REPSSI Annual Report 2012. Johannesburg: REPSSI. www.repssi.org

