

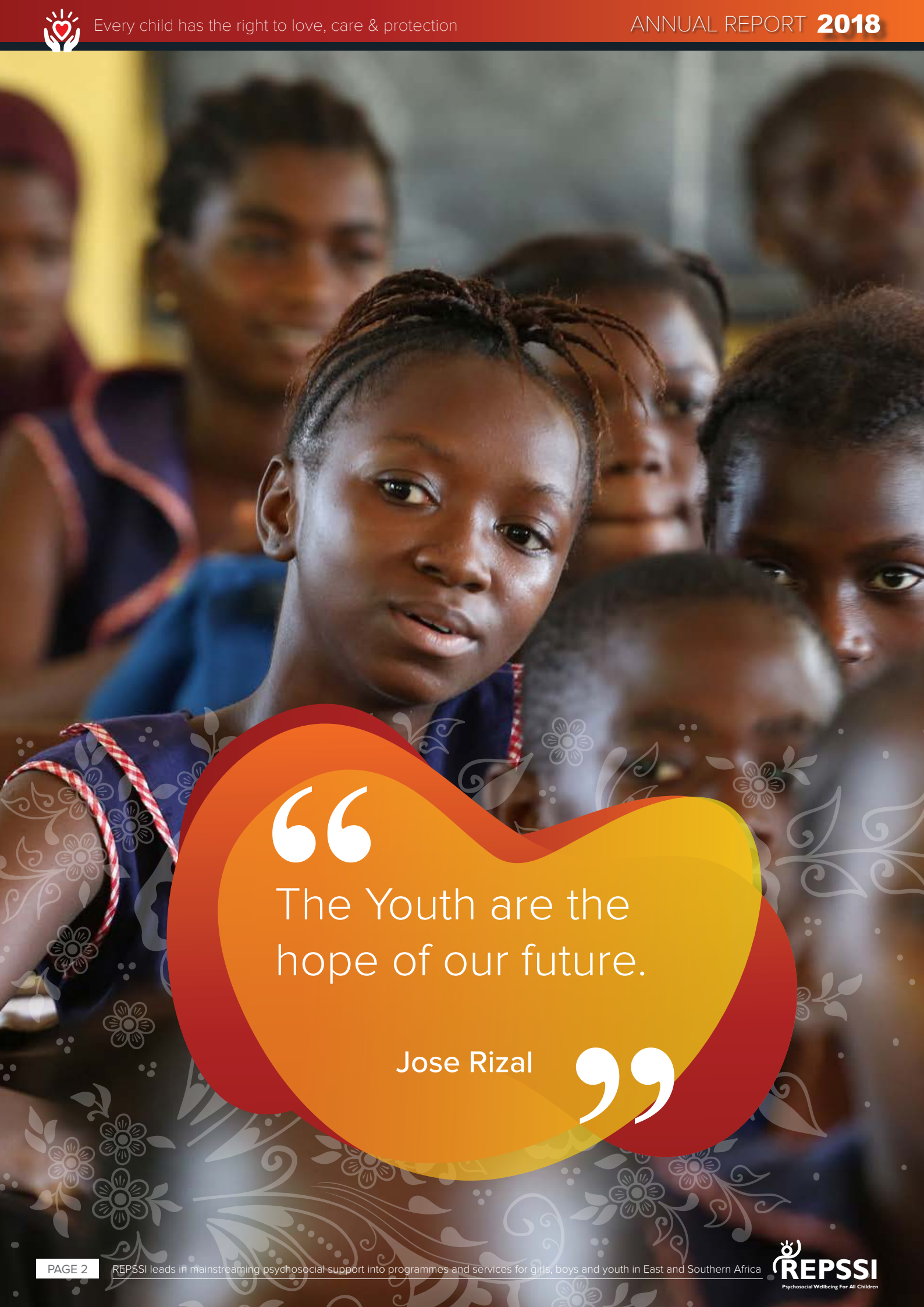


ANNUAL REPORT **2018**

REPSSI leads in mainstreaming psychosocial support into programmes and services for girls, boys and youth in East and Southern Africa

    www.repssi.org


REPSSI
Psychosocial Wellbeing For All Children



“

The Youth are the
hope of our future.

Jose Rizal

”



MASTER GOAL

By 2020, REPSSI will provide technical assistance and lead advocacy for sustained psychosocial support mainstreaming into programmes and services for girls, boys, youth, families and communities in East and Southern Africa so that they live with hope, dignity and happiness.

MISSION

REPSSI leads in mainstreaming psychosocial support into programmes and services for girls, boys and youth in East and Southern Africa.

VISION

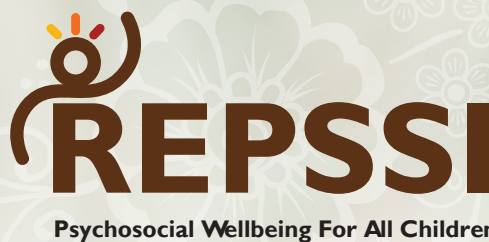
All girls, boys and youth enjoy psychosocial and mental wellbeing.



ABOUT REPSSI

REPSSI began its operations in 2002 in the East and Southern Africa region, responding to the need for psychosocial support (PSS) for girls, boys and youth affected by poverty, conflict, HIV and AIDS. REPSSI has since grown into a regional organisation with varying levels of presence and programming in Angola, Botswana, Eswatini, Kenya, Lesotho, Malawi, Mozambique, Namibia, South Africa, Tanzania, Uganda, Zambia and Zimbabwe. REPSSI's focus has broadened to mainstreaming of PSS as a critical enabler for girls', boys' and youth's programmes and services. REPSSI is the leading African PSS advocate and provider of technical expertise.

The strategy formulation was informed by broad national, regional and global consultations, substantiated by current research on psychosocial support issues affecting children, youth, families and communities, and an evaluation of REPSSI's past performance. The strategy is aligned to the UN Convention on the Rights of the Child (CRC), the African Charter on the Rights and Welfare of the Child (ACRWC), Southern African Development Community's (SADC) PSS Framework and Minimum Package of Services for Orphans, Vulnerable Children and Youth (OVCY) and the East African Community's (EAC) HIV and AIDS strategy. The 2016-2020 strategy builds on previous lessons and successes, positioning REPSSI for further culturally-relevant, age- and gender-appropriate, evidence-based impact over the next five years.







CHAIRPERSON'S MESSAGE

When the Board of REPSSI approved the Annual Plan for the year 2018 a great responsibility was placed on the board and management to ensure implementation of the programmes for Mental Health and Psychosocial Support in the 13 countries of the South and East African region. The board will continue to support management towards implementation of the programmes of REPSSI. The board would like to congratulate the management and team in their continued quest to raise funds for the organization. We are grateful for the support received from the donors and partners (Embassy of Sweden, Swiss Agency for Development & Cooperation, the International HIV and AIDS Alliance, Synergos, UNICEF, Department of Social Protection Botswana, AFRICARE, GIZ, 4Children/CRS, Hivos)

The year 2018 has been both exciting as well as challenging for REPSSI. The first concrete steps towards the establishment of APSSI as “the globally recognized hub for child and youth psychosocial and mental wellbeing in Africa” were taken, culminating in the launch of the Institute in November. Within the same month our CEO, Noreen Huni, was awarded a prestigious Jacobs Foundation prize for her role as a social innovator with nine others from various parts of the globe at a glittering event in Zurich, Switzerland.

The regional board had rotation of its members, with Dr Lewis Ndhlovu and Mrs Cynthia Pongweni stepping down at the Annual General Meeting where we welcomed new members Dr Margriet Blaauw and Mr Thomas Fenn. Dr Malega Kganakga was nominated as the new Chairperson of the Board with Mr Gavin Tipper the new Treasurer. REPSSI continues to appreciate the board directors who serve the organization with dedication on a purely voluntary basis and the expertise brought in to grow the entity. The board has worked hard to

fulfill its fiduciary responsibility. The 2017 external audit yielded an unqualified audit opinion. This gives the board confidence in REPSSI's administration and management.

REPSSI and SADC formalized their long standing relationship through signing an MoU. REPSSI will continue to engage with and support SADC in the development and domestication of child and youth focused strategies and protocols. REPSSI also continued its collaboration with the East Africa Community through the launch of the Minimum Standards for Comprehensive Services for Children and Young People. REPSSI is actively engaged in global fora such as the Coalition for Children affected by HIV and AIDS; the Interagency Standing Committee for Mental Health and Psychosocial Support in emergencies and the MHPSS.net.

For the last few months of the year our CEO was away on disability leave. On behalf of my fellow board members, I would like to thank Ms Lynette Mudekunya and the whole REPSSI team who maintained the high performance levels. The board would like to extend its appreciation to Dr Lewis Ndhlovu, for support during the CEO's absence, including rejuvenating the Thought Leaders process.

I would like to give all our partners the assurance that there is good corporate governance of the organization and the objectives are being met to the extent that available resources and finances permit.

Dr M. C. Kganakga
CHAIRPERSON of the BOARD



CEO'S MESSAGE

The Mid Term Review that was conducted in 2018 showed that REPSSI was, overall, on track to achieve its objectives for the fourth phase of our strategy. It also pointed out areas for improvement and refining which are being addressed. Although the Sweden funded sexual and reproductive health programme had a slow start in 2016 and elements of it were still underdeveloped at the beginning of 2018, through determined effort across the organization we achieved or exceeded all the reach targets by the end of the year. We are now engaged in endline assessments to understand the extent to which we achieved change. We are pleased with the performance and believe that REPSSI is well placed to continue promoting psychosocial and mental wellbeing for children and youth in our region.

In 2018 REPSSI began to develop a comprehensive on line system for planning, budgeting and tracking both financial and programmatic progress. We had a successful regional audit, as well as successful country audits in Zimbabwe, Tanzania and Mozambique. Our total staff complement was 60 full and part time staff, of whom 38 were women and 22 men. A number of the REPSSI team participated in a wide range of conferences, workshops and meetings, through which they were exposed to new information and contributed to several processes.

During the year REPSSI appointed a consultant to lead deeper engagement in humanitarian emergency work at national and regional level. We were able to engage in webinars, training and took the first steps towards establishment of a regional Community of Practice on Mental Health and PSS in humanitarian emergencies in East and Southern Africa.

REPSSI team members have become more active, visible and influential in a number of national and regional Technical Working Groups. Our presence has also expanded in social, print, audio and visual media. In 2018, a study to analyze budget allocations for psychosocial support (PSS) in seven SADC countries was commissioned. The study found that the countries have made progress in developing policies to respond to the PSS needs of children and the youth. Though progress is uneven, some countries are beginning to allocate resources towards PSS programmes within their budgets.

Donor funding uncertainties remained through 2018. Some of our country offices have succeeded in national resource mobilisation and during the year we began to negotiate with Sweden on a different kind of relationship, based on project based funding. REPSSI continues to strive to expand our resource base through generation of our own income in training and other fees in collaboration with its subsidiary, the Africa Psychosocial Support Institute. At the end of the year we have sufficient commitments for the foreseeable future as a going concern entity.

We thank all our implementing partners in the various countries in which REPSSI operates. We look forward to seeing you at the 2019 Psychosocial Support Forum in Windhoek, Namibia.

Ms N. M. Huni
CEO REPSSI

NCMA



APSSI LAUNCH



Meet the APSSI team – pictured are the team from UKZN and within APSSI

20 November 2018 marked the beginning of a new era for REPSSI, as it officially launched its Africa Psychosocial Support Institute (APSSI), in partnership with the University of KwaZulu Natal (UKZN). The event was attended by REPSSI’s traditional partners including NGOs and government partners, and also by new potential APSSI partners within the private sector.

APSSI is a global hub of psychosocial and mental wellbeing knowledge, research, advocacy and capacity development. It is designed to bring Afrocentric wellness solutions to the world using evidence based materials and approaches for effective, diverse interventions able to respond to and be tailored to address any requirement.

The institute has two arms:

- Academic Programmes whose focus areas are delivering accredited training programmes and thought leadership through symposia, publications and PSS research and;
- Sales of Mental Health & Psychosocial Support Products and Services which provides services for a fee such as training in PSS, PSS research and evidence informed mental health and PSS manuals.

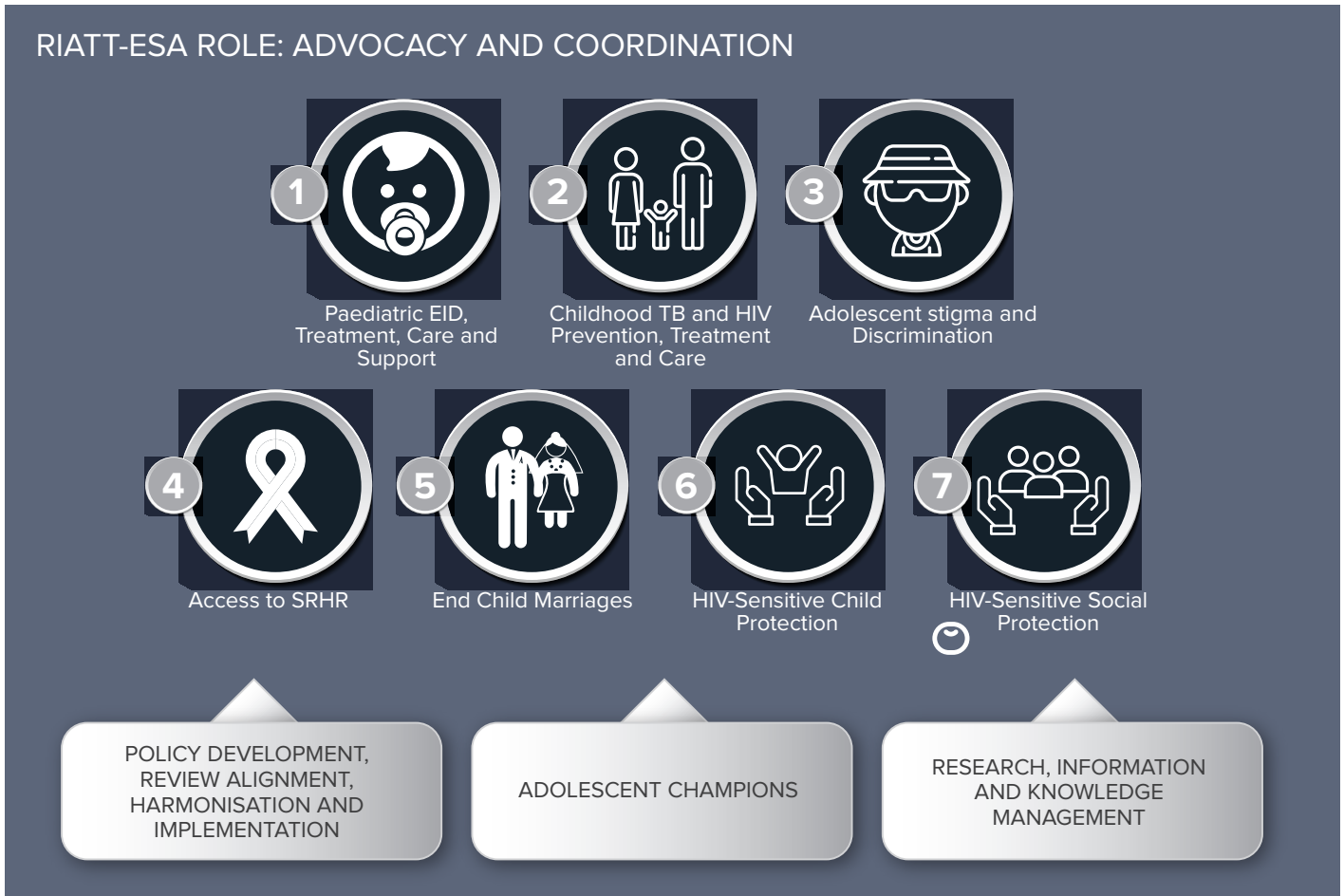
To seek APSSI products and services or for more information, individuals are invited to contact apssiadmin@repssi.org.





RIATT-ESA

The RIATT-ESA network sustained its pivotal role of being the regional voice for children affected by AIDS – addressing such issues as children’s vulnerability and rights in a part of the world that is badly hit by HIV, with an authoritative, informed and unified voice. Guided by the UNAIDS 90-90-90 goals and the SDGs, RIATT ESA reviewed its strategy for the period 2019 – 2022. Emerging themes or focus areas and the role of the RIATT-ESA network for the 2019-2022 Strategy are illustrated below:



RIATT-ESA, the Southern Africa Development Community (SADC) and REPSSI co-convened the Second Regional Learning and Linking Forum for Accelerating Delivery of Comprehensive Services for Orphans and Vulnerable Children and Youth in November. The meeting was attended by civil society and government partners from both SADC and the EAC who appreciated the sharing of experiences between the two regions and recommended that such events should be held regularly.



REPSSI FOOTPRINT



Angola

Country Representative: Antonio Felix Jeronimo
Email: Felix.Jeronimo@repssi.org
Partners: AFRICARE, SOS Angola, Instituto Nacional da Criança
Programmes: Encouraging Prevention of Mother to Child Transmission of HIV; Ending Child Marriage; Domestication of the Minimum Package of Services



Botswana

Country Representative: Mmamiki Kamanakao
Email: Mmamiki.Kamanakao@repssi.org
Partners: Department of Social Protection, Botswana Open University
Programmes: Building capacity of the Social Services Workforce; Domestication of the Minimum Package of Services



Eswatini

Country Representative: Mandla Mazibuko
Email: Mandla.Mazibuko@repssi.org
Partners: Moya Centre, National Children Services Department, University of Eswatini, William Pitcher College, Ngwane Teachers College, CANGO (Co-ordinating Assembly of Non-Governmental Organisations)
Programmes: Building capacity of the Social Services Workforce; READY; Domestication of the Minimum Package of Services; Social Connectedness



Kenya

Country Representative: Divina James
Email: Divina.James@repssi.org
Partners: Department of Children's Services, KORDP (Kenya Orphans & Rural Development Programme), KICOSHEP
Programmes: Domestication of the Minimum Standards on Comprehensive Services for Children & Young People



Lesotho

Country Representative: Phomolo Mohapeloa
Email: Phomolo.Mohapeloa@repssi.org
Partners: Ministry of Social Development, Sentebale, Touch Roots Africa, SOS Lesotho, World Vision
Programmes: Building capacity of the Social Services Workforce, Domestication of the Minimum Package of Services, Access to Comprehensive Sexuality Education



Malawi

Country Representative: George Alufandika
Email: George.Alufandika@repssi.org
Partners: YWCA, Malawi Girl Guides Association, Ministry of Gender, Children, Disability & Social Welfare, FAWEMA (Federation of Women Educationists of Malawi)
Programmes: Preventing GBV to End Child Marriage; Supporting adolescent mothers; Domestication of the Minimum Package of Services; Social Connectedness





Mozambique

Country Representative: Julio Mutemba

Email: Julio.Mutemba@repssi.org

Partners: OASIS, Hixikanwe, ADECC (Community Capacity Development Association), Ministry of Gender, Children and Social Welfare

Programmes: READY; Ending Child Marriage; Campaign to increase HIV testing



Namibia

Country Representative: Helena Amadhila

Email: Helena.Amadhila@repssi.org

Partners: Ministry of Education, Arts & Culture, Ministry of Gender Equality & Child Welfare, Ministry of Health & Social Services, NAMCOL (Namibian College Of Open Learning)

Programmes: Building capacity of the Social Services Workforce; Domestication of the Minimum Package of Services



South Africa

Country Director: Eric Motau

Email: Eric.Motau@repssi.org

Partners: Nelson Mandela Children's Fund, Department of Social Development, Afrika Tikkun

Programmes: Preventing GBV; Building capacity of the Social Services Workforce; Domestication of the Minimum Package of Services



Tanzania

Country Director: Edwick Mapalala

Email: Edwick.Mapalala@repssi.org

Partners: HUMULIZA, KWA WAZEE. PASADA. SOS Tanzania; Institute of Social Work; Ministry of Health, Community Development, Gender, the Elderly & Children

Programmes: READY; Ending Child Marriage; Domestication of the Minimum Package of Services; Building capacity of the Social Services Workforce



Uganda

Country Representative: Michael Byamukama

Email: Michael.Byamukama@repssi.org

Partners: World Vision, CoW (Children of the World) Foundation, WONETHA, Ministry of Gender Labour and Social Development

Programmes: Ending Child Marriage; Supporting Children of Sex Workers; Domestication of the Minimum Standards on Comprehensive Services for Children & Young People; Standards on Comprehensive Services for Children & Young People; Building capacity of the Social Services Workforce



Zambia

Country Director: Kelvin Ngoma

Email: Kelvin.Ngoma@repssi.org

Partners: Network of Zambian people living with HIV, YWCA, Latkings outreach project, Restless Development, PPAZ (Planned Parenthood Association of Zambia)

Programmes: Access to Comprehensive Sexuality Education; Campaign to increase HIV testing; Building capacity of the Social Services Workforce; Ending Child Marriage



Zimbabwe

Country Director: Sibusisiwe Marunda

Email: Sibusisiwe.Marunda@repssi.org

Partners: BHASO (Batanai HIV & AIDS Service Organisation), MMPZ (Million Memory Project of Zimbabwe), Ministry of Health and Child Care, Ministry of Labour, Public Service and Social Welfare, Shanduko yeUpenyu

Programmes: Supporting adolescent mothers; Building capacity of the Social Services Workforce, Ending Child Marriage, READY



REPSSI PROGRAMMES

REPSSI's programming is based on working with and through a range of government, academic and civil society partners to mainstream PSS into programmes which achieve outcomes in the social sector, health and education, including early childhood development. The major collaborative programmes that REPSSI and partners engaged in during 2018 were:

Building the Capacity of the Social Services Workforce

REPSSI has pioneered delivery of accredited programmes in psychosocial support to build the capacity of the critical workforce for children and youth in the region. This workforce includes those in social sectors such as child protection, social development, community development, justice and the police; in education as well as health. The Community Based Work with Children and Youth programme is delivered as several variants (at certificate and diploma level) by REPSSI itself in Zambia where we are accredited by TEVETA (the Technical Education, Vocational and Entrepreneurship Training Authority) and South Africa, where we are accredited by the Health and Welfare SETA (Sector Education and Training Authority); by APSSI with the University of KwaZulu Natal in Lesotho and Zimbabwe and together with national academic institutions in Botswana, Eswatini, Namibia and Tanzania.

Country	Students Enrolled			Continuing Students			Graduates		
	Male	Female	Total	Male	Female	Total	Male	Female	Total
Botswana			83				3	34	37
Eswatini	25	153	178	13	86	99	20	165	185
Lesotho						104			
Namibia	1	29	30				1	11	12
South Africa	3	17	20						
Tanzania	27	66	93				14	40	54
Zambia Diploma	71	70	141	236	298	534			
Zimbabwe				17	90	107			
TOTAL			545			844	38	250	288

The Teachers Diploma in Psychosocial Care, Support and Protection is being delivered with the National University of Lesotho and has been incorporated into pre-service teacher training programmes of William Pitcher and Ngwane Teacher Training Colleges in Eswatini.

REPSSI began to develop a certificate level training course in PSS for those working in the health sector. By the end of the year the materials for this course were nearly final.

REPSSI has been an Ambassador for the Global Social Service Workforce Alliance (SSW) for two years and works with the GSSWA to promote the need for training and other support to the SSW at national, regional and global levels.

Support for Domestication of the SADC Minimum Package of Services & EAC Minimum Standards

REPSSI supported the governments of Angola, Botswana, Eswatini to hold national level sensitization workshops about the SADC Minimum Package of Services and the PSS Conceptual Framework. REPSSI also supported the governments of Kenya, Tanzania and Uganda to hold national level sensitization processes on the EAC Minimum Standards of Comprehensive Services for Children & Young People. In Mozambique and Zambia REPSSI supported local level dissemination of the SADC Minimum Package. In Zambia this involved working with several traditional leaders and ward councillors. Local service providers credit this roll out with contributing to increase in women accessing antenatal care, reduction in teen pregnancy and school drop out, with increasing numbers of girls re-entering school after pregnancy.

READY

REPSSI is one of the partners in a programme to increase access to SRHR for adolescents living with HIV. REPSSI is both a technical partner in the provision of PSS, and the coordinating lead in three countries. REPSSI works closely with implementing partners in Beira and Maputo, Mozambique; Kagera and Dar es Salaam, Tanzania; Chitungwiza, Masvingo and Bulawayo in Zimbabwe. Other technical partners are:

- Africaid whose expertise is in training and supporting Community Adolescent Treatment Supporters (CATS) who are young people, aged 18 to 24 living with HIV, that support their peers to be tested, access treatment and adhere to treatment. In this project they are also providing information on SRHR and supporting their peers to access SRHR services.



“

We rise by
lifting others.

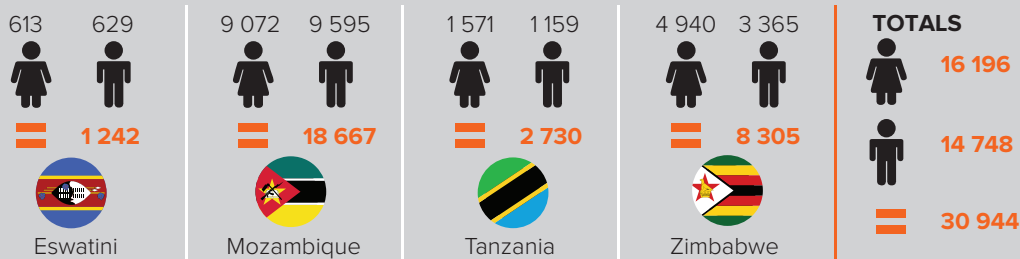
Robert Ingersol

”

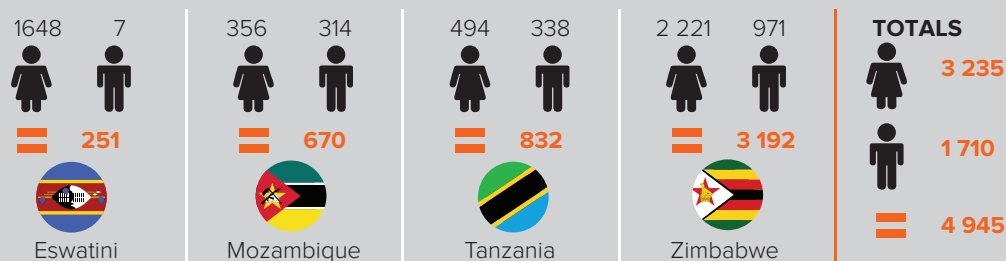


- PATA (Paediatric AIDS Treatment Africa) whose expertise is in supporting health facilities to provide HIV services to children and young people.
- M&C Saatchi whose expertise is in communications have been working with the programme in Eswatini and Mozambique to develop an app that can provide information to young people on SRHR.
- The International HIV and AIDS Alliance provides overall leadership, coordination, monitoring and liaison with the Netherlands Embassy who are funding this programme.

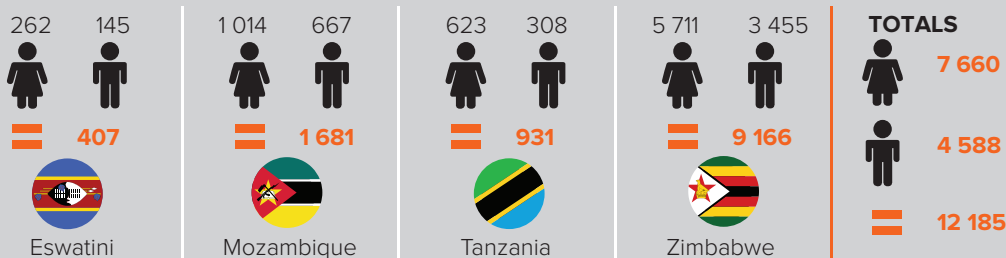
In the second year of the programme REPSSI was able to work with communities and parents to support adolescents who are living with HIV.



Number of A&PLHIV provided with HIV and SRHR education



People taking part in community dialogues



Number of A&YPLHIV provided with quality integrated HIV/SRHR/ psychosocial support

Preventing Gender Based Violence (GBV) ... to End Child Marriage

We have continued our work to prevent GBV with the Nelson Mandela Children's fund and two of their partners working with schools in Limpopo province and Diepsloot, Gauteng. In response to findings in 2017 that sessions had been too rushed for the children we retrained teachers in Limpopo and Empowering Girls and Peace is a Decision sessions were repeated, as intended, over a period of time. The partners also held community conversations to engage parents and communities.

In Malawi REPSSI collaborated with Malawi Girl Guides Association and Scouts Association of Malawi to work with 98 schools in four districts. Each school had an average of 50 boys and 50 girls in groups that were conducted by volunteer guide and scout leaders from amongst the teachers in the schools. The boys went through the Peace is a Decision programme while the girls participated in Empowering Girls. Communities around the schools were engaged in conversations on making their communities safer and ending child marriage. We anticipate that these conversations will continue in 2019.

Supporting Adolescent Mothers

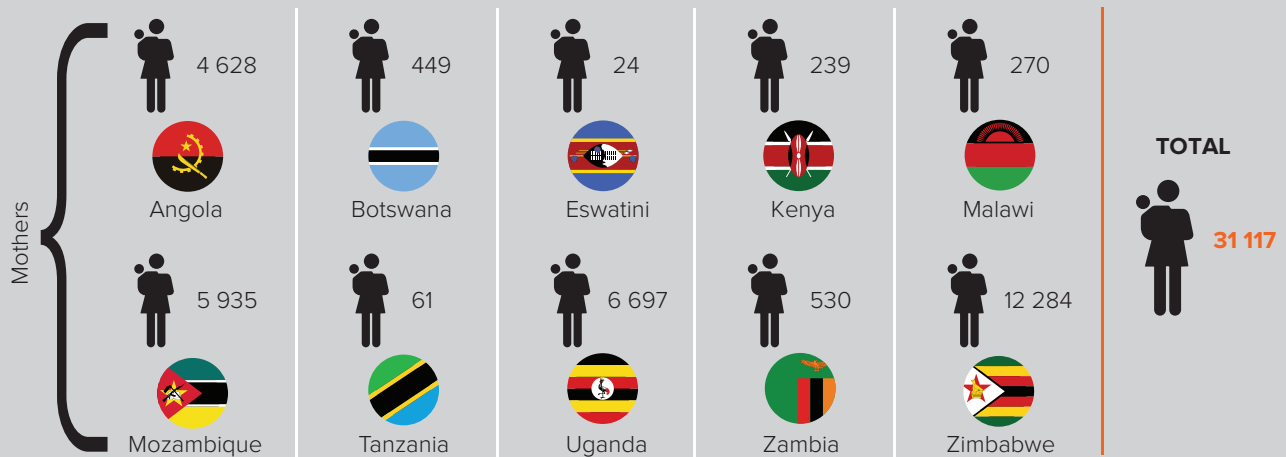
REPSSI was the main implementing organization for an emergency response programme in 24 districts of Zimbabwe, funded by UNICEF, to improve the developmental outcomes of babies of adolescent mothers. Though the Resilient Adolescent Mothers for Healthy Children (RAM4HC) programme had a short life span, social workers were able to engage with nurses in the clinics to



integrate PSS into Maternal and Child Health and to work with both village health workers as well as community caregivers. This increased collaboration at the implementation level is improving access to services for adolescent mothers. A disturbing observation is the number of adolescent mothers who have a second and even a third child in quick succession.

REPSSI Malawi is supporting the YWCA to implement a small programme, with inbuilt monitoring, to show the impact of PSS for adolescent mothers. The Saving Brains programme has structured bi weekly sessions, using the REPSSI Babies and Young Children manual. This year we have also engaged fathers in some sessions to discuss their babies' wellbeing and development. Many of the fathers are very young.

We have collected practice based evidence from both programmes to produce programme guidance.



Women accessing integrated maternal and child health services that include PSS as a key component

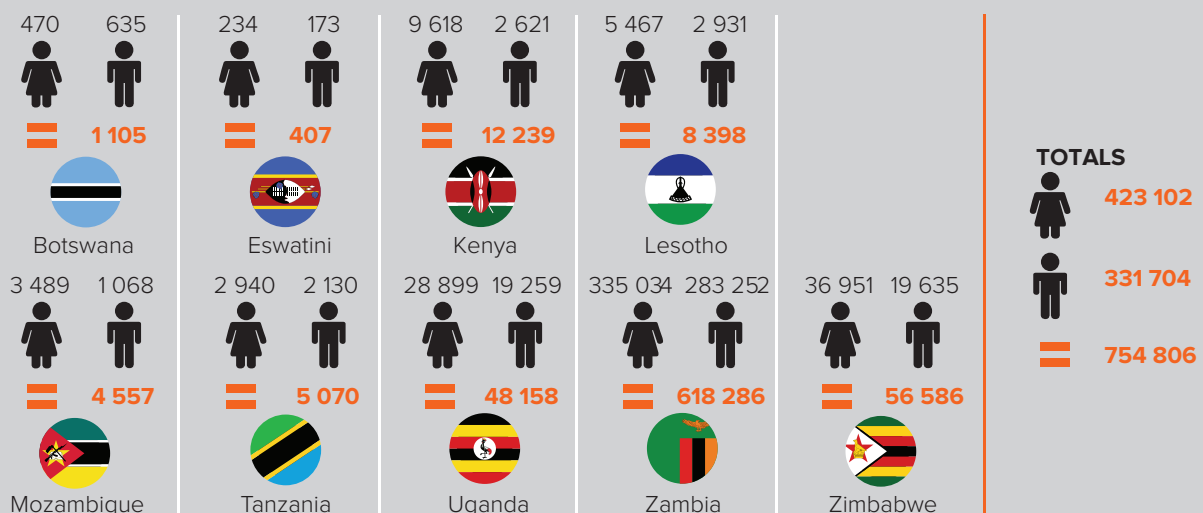
Encouraging PMTCT

REPSSI Angola has partnered with Africare to receive funding from the Global Fund to encourage mothers to be tested for HIV and to access PMTCT (Prevention of Mother to Child Transmission of HIV) in Moxico province of Angola, a remote province bordering Zambia, with poor services. One of the greatest challenges has been that mothers are motivated to seek testing but health facilities do not have enough testing kits. REPSSI also conducted training for health workers in basic reproductive health care. Though there have been many delays with the funding flows, we hope to continue this project as there is such incredible need for it.

Expanded Access to Comprehensive Sexuality Education (CSE) and other Sexual and Reproductive Health (SRH) Services

Our major contribution to expanding access to CSE and SRH services has been in:

- Encouraging teachers that are enrolled in the Teachers' Diploma in Lesotho to teach CSE and providing them with some simple tools (the REPSSI Flip It and Aunty Nomsa cards) to engage their learners in discussion.
- Placing CBWCY diploma students in 6 partner programmes in Zambia to provide PSS support to partner SRHR programmes, enhancing their impact and reach.



Adolescents in the project area accessing ASRH services



“

Education is the most powerful weapon which you can use to change the world.

Nelson Mandela

”



Expanding Children’s Social Connectedness

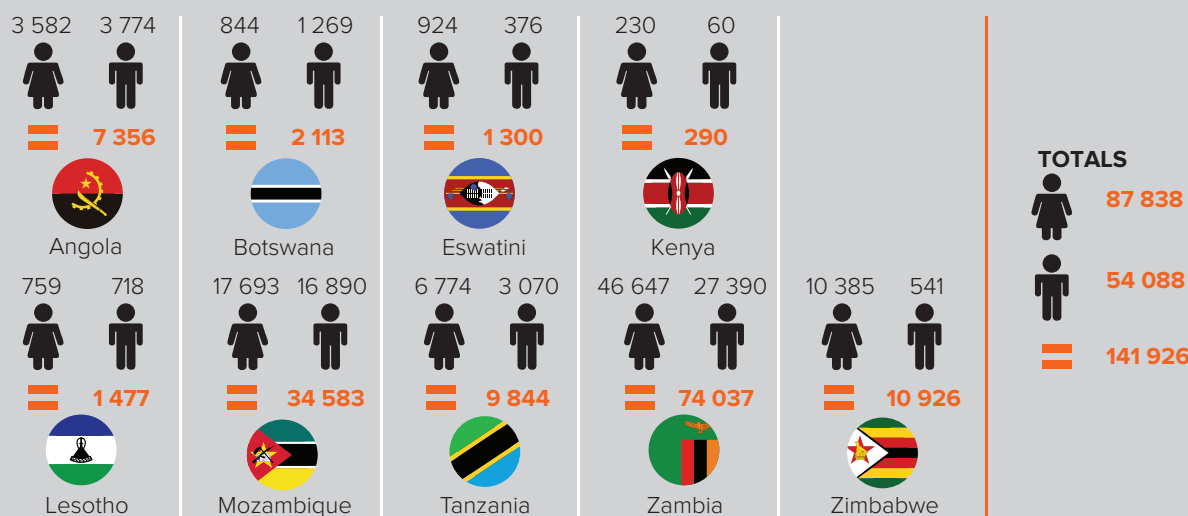
REPSSI has partnered with Synergos Foundation to promote the role of social connectedness in improving the psychosocial wellbeing of children in Eswatini and Malawi. The projects, which use the REPSSI Social Connectedness Action Workshop to raise awareness in children, their families and communities, and then to actively promote improved connectedness, have not been large but they have shown deep change for the children and their families.

Promoting HIV Testing in Children and Adolescents

REPSSI campaigned actively to promote HIV testing in children and adolescents. This included production and dissemination of IEC material for the World AIDS Day and social media messages focused on promoting testing and breaking barriers (such as stigma and discrimination) that hinder people from HIV testing:

- Test, treat, care and support
- Know your status, take control of your future
- Breaking barriers with love, care and protection

World AIDS Day was an opportunity to remind each other that HIV is still spreading at an alarming rate, especially amongst the youth. Overall, REPSSI has contributed to much greater awareness of the value of testing, resulting in increased numbers who are being tested.



Children and adolescents tested for HIV

End Child Marriage Campaign

The ending child marriage campaign continued across Angola, Malawi, Mozambique, Tanzania, Uganda, Zambia and Zimbabwe in collaboration with the media and various partners. The main interventions were community dialogues targeting traditional and religious leaders within affected communities. The campaign worked with local authorities in several countries and included a song and DVD about the negative psychosocial impact of “marriage” on a child. Children were also mobilized to advocate with one another and their families to keep children in school.

Numbers reached through the campaign in 2018:

Country	Adults			Children			GRAND TOTAL
	Female	Male	Total	Girls	Boys	Total	
Angola	3 652	5 477	9 129	1 279	1 089	2 368	11 497
Malawi	436	623	1 059	5 000	5 000	10 000	11 059
Mozambique	4 896	1 607	6 503	22 514	13 754	36 268	42 771
Tanzania	6 119	5 320	11 439	8 480	6 882	15 362	26 801
Uganda	19 162	14 421	33 583	177 255	162 135	339 390	372 973
Zambia	31 293	25 123	56 416	85 168	76 514	161 682	218 098
Zimbabwe	287	416	703	17 320	9 069	26 389	27 092
TOTAL	65 845	52 987	118 832	317 016	274 443	591 459	710 291

Two REPSSI country directors participated in the Girls Not Brides Global meeting in Malaysia which brought together, and connected, over 500 advocates, practitioners, policy makers and donors from all over the world to learn, inspire and align their strategies to end child marriage.



FINANCIALS

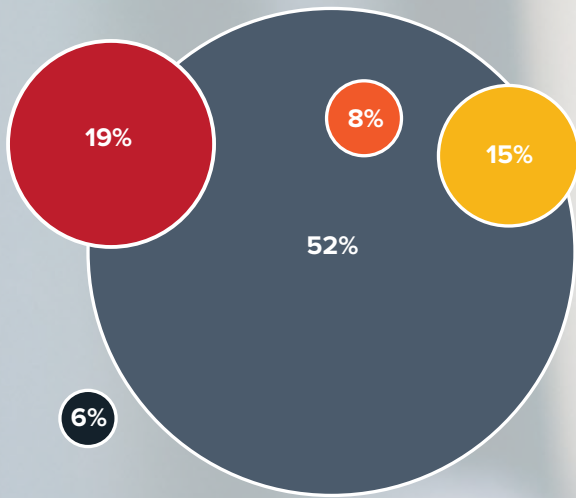
Statement of Financial Activities for the year ended 31st December 2018

Based on Audited Financial Statements

STATEMENT OF COMPREHENSIVE INCOME	2018 (EURO)	2017 (EURO)
REVENUES		
Grants from ICPs	3 999 038	4 674 637
Income from Services	478 239	433 969
Investment Revenue	5 436	6 930
TOTAL INCOMING RESOURCES	4 482 713	5 115 536
OPERATING EXPENSES		
Program costs	3 422 472	4 101 380
Governance & Admin Costs	526 759	533 847
Cost of Sales	195 661	106 523
Total Expended Resource	4 144 892	4 741 750
NET (OUTGOING) RESOURCES FOR THE YEAR	337 821	373 786
Other comprehensive income/loss	-	177 506
Other Obligations	147 692	6 207
Fund balance as at 1 Jan	2 332 303	1 787 218
Fund balance as at 31 Dec	2 817 816	2 332 303
STATEMENT OF FINANCIAL POSITION		
Property Plant and Equipment	324 013	323 236
Current Assets (Trade & other receivables + Cash & Cash Equiv.)	3 201 650	2 844 335
Trade and other Payables	154 179	166 050
Deferred Income (Grants received in advance)	553 668	669 218
NETS ASSETS	2 817 816	2 332 303
Represented by:		
Retained Income	2 817 816	2 332 303

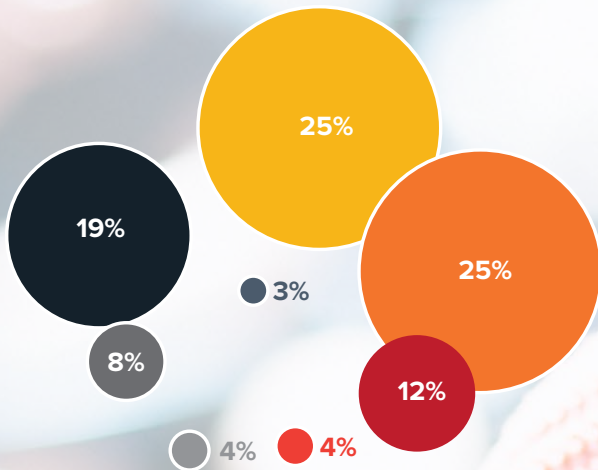


Annual Expenditure 2018



- Research and Resource Development
- Advocacy and Networking
- Mainstreaming, Capacity Development, Technical Assistance
- Monitoring and Evaluation
- Organisational efficiency and sustainability

Programme income 2018



- Sweden (inc RIATT Funding)
- Swiss Agency for Development Cooperation
- Alliance -READY Project includes iREADY
- Comic Relief
- United Nations Children's Fund - Zimbabwe
- REPSSI Social Development income
- Other Donors





Other donors funding comprises contributions of less than €50 000 from some REPSSI partners are listed below. REPSSI appreciates all its large and small funding partners. In kind contributions making up to 19% of our annual funding are equally appreciated.

OTHER DONORS IN EURO	191 034,6
Africare – UNDP	17 110
PITCH Mozambique	13 632
WEI Mozambique	35 388
FHI 360 Mozambique	22 915
Global Network Partnership Y+	5 715
PATA - Mozambique	194
Synergos Malawi & Swaziland	8 388
Department of Social Protection (Botswana)	15 349
YWCA – Malawi	10 035
HIVOS - Zimbabwe	12 755
Voluntary Services Organisation (VSO) Zimbabwe	10 020
GIZ - South Africa	2 792
FNB Namibia	922
Jacobs Foundation	614
Nelson Mandela Children Foundation - South Africa	10 893
Catholic Relief Services 4Children	15 512
MHPSS	8 800

Please note that income is recognised to the extent that it is utilised each year

“

The Youth of a Nation are the trustees of posterity.

”





REPSSI REGISTRATION AND GOVERNANCE

Country, registration status and country advisory board

Regional

Registration status

Non-Profit Organisation under Section 21 of the South African Companies Act Enterprise Number: 2005/004648/0 and NPO Registration 041- 787 – NPO

Board

Chair: Dr Malega C. Kganakga; Treasurer Mr Gavin Tipper; Dr Margriet Blaauw; Mr Thomas Fenn; Ms Noreen Huni; Mr Kaumbu Mwondela; Ms Jeanne Ndyetabura; Dr Alison Shafer; Meets 3 times per year and Annual General Meeting

APSSI

Registration status

Registration in progress

Board

Nominated board members: Ms Noreen Huni; Dr Malega C. Kganakga; Dr Thandi Magojo

Angola

Registration status

As a non governmental organization No. 5/2014 fls. 3 do LivroB, Published in Diário da República N.o 210 III Série de 29/10/2015

Country Advisory Board

Not yet established

Botswana

Registration status

Registration Number: EX2012/7769

Country Advisory Board

Established and meets regularly. Chair Ms Dorothy Tlagae

Eswatini

Registration status

Registered under the Swaziland Companies Act No.8 of 2009. Certificate No. 203 of 2015, company ID: 201502053002013. No: R7/42484

Country Advisory Board

Established. Chair Mr Clement Dlamini

Kenya

Registration status

Not registered

Country Advisory Board

Interim chair (pending establishment) Mr Noah Sanganyi

Lesotho

Registration status

Registration number 2014/94 PVO

Country Advisory Board

Established. Members established, but chair not yet elected

Malawi

Registration status

Registered under the NGO Board of Malawi cert # NGO/R/14/38 and CONGOMA cert # C820/2014

Country Advisory Board

Established and meets regularly. Chair Ms Hyacinth Kulemeka

Mozambique

Registration status

Non-Governmental Organization, Republuca Bulletin No. 55-98

Country Advisory Board

Not yet established

Namibia

Registration status

Registration No: F/2005/00464//08

Country Advisory Board

Not yet established

South Africa

Registration status

Subsumed with the regional

Tanzania

Registration status

Registered under Non Governmental Organizations Act No 24 of 2002. Registration No INGO 0009501

Country Advisory Board

Pending reconstitution. Interim Chair Ms Jeanne Ndyetabura

Uganda

Registration status

the Non – Government Act, CAP. 113 with registration number 10803 as a foreign NGO operating in Uganda – Also Incorporated under Uganda laws as a company limited by guarantees under registration number 80020000114360

Country Advisory Board

Interim chair (pending establishment) Ms Grace Onyango

Zambia

Registration status

Registration number 130378, as a company limited by Guarantee, under companies Act Cap 388, of the Laws of Zambia

Country Advisory Board

Established and meets regularly. Chair Mr Kaumbu Mwondela

Zimbabwe

Registration status

Registered-as a Private Voluntary Organization, PVO 10/12

Country Advisory Board

Established and meets regularly. Chair Justice Euna Makamure



REPSSI FUNDERS IN 2018



Comic Relief





Contact us:

REPSSI Secretariat

+27 11 886 1581/61

+27 11 886 1670

info@repssi.org

www.repssi.org

PO Box 23076, Randburg West, 2167
266 West Avenue, Cnr Republic Road Unit 2
Waterfront Office Park, Randburg 2194, South Africa

APSSi
Africa Psychosocial Support Institute
A division of REPSSI

REPSSI leads in mainstreaming psychosocial support into programmes and services for girls, boys and youth in East and Southern Africa

    www.repssi.org


REPSSI
Psychosocial Wellbeing For All Children